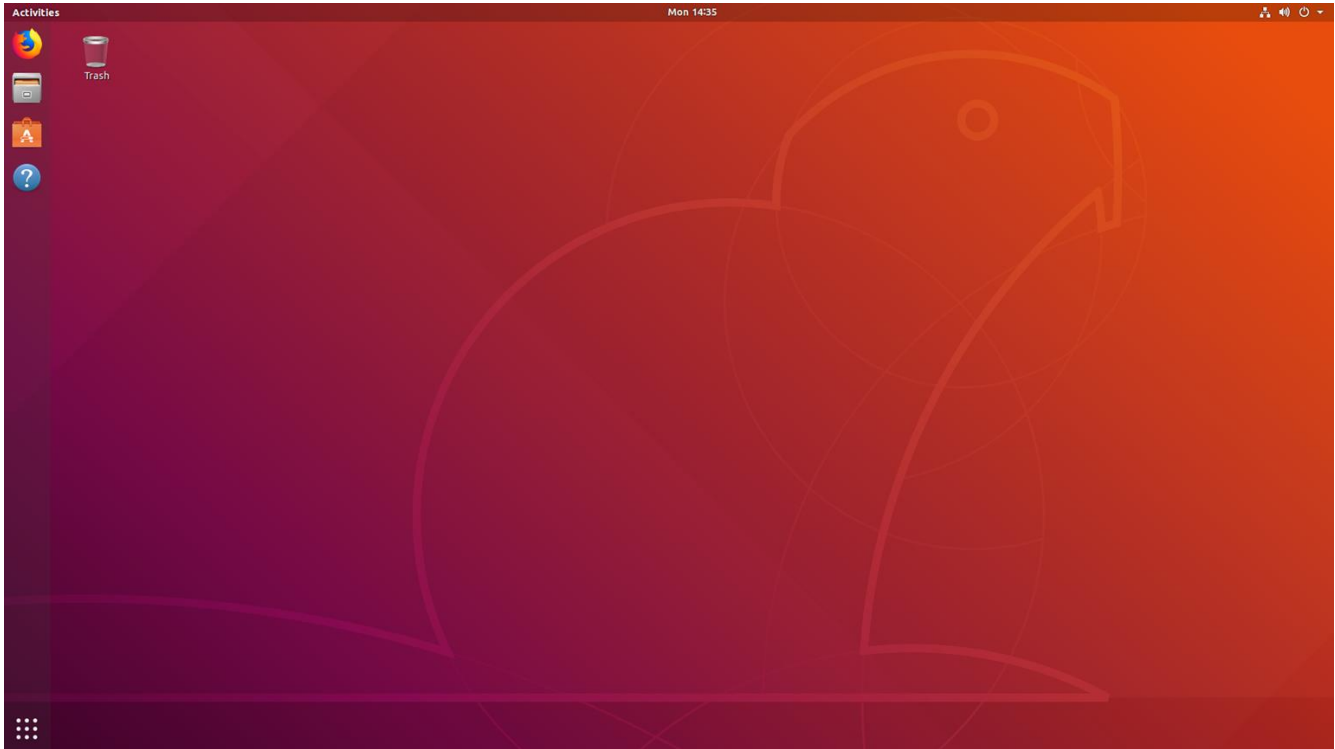


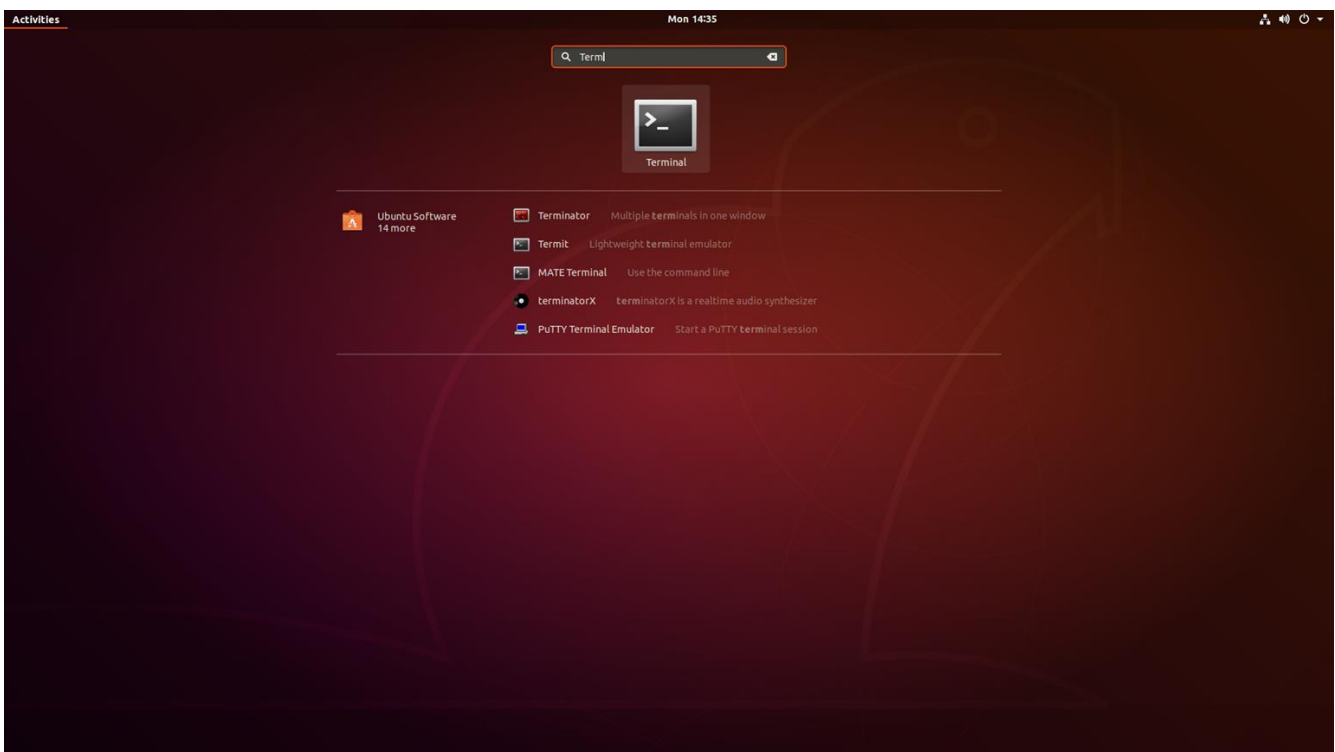
# CoE PulseSecure VPN Connection Guide for Ubuntu

## Instructions for Ubuntu 18.04

Start from your desktop.

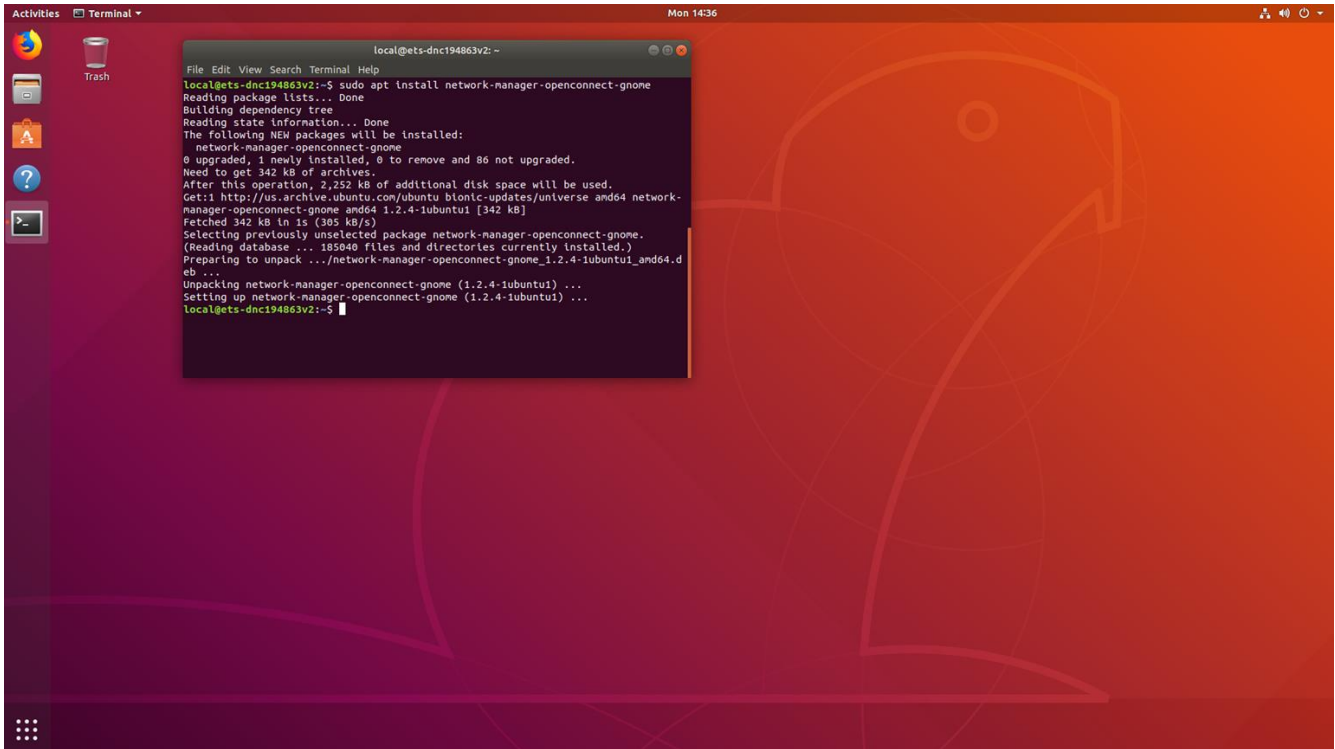


Open the *Activities* menu and find the application called *Terminal*.

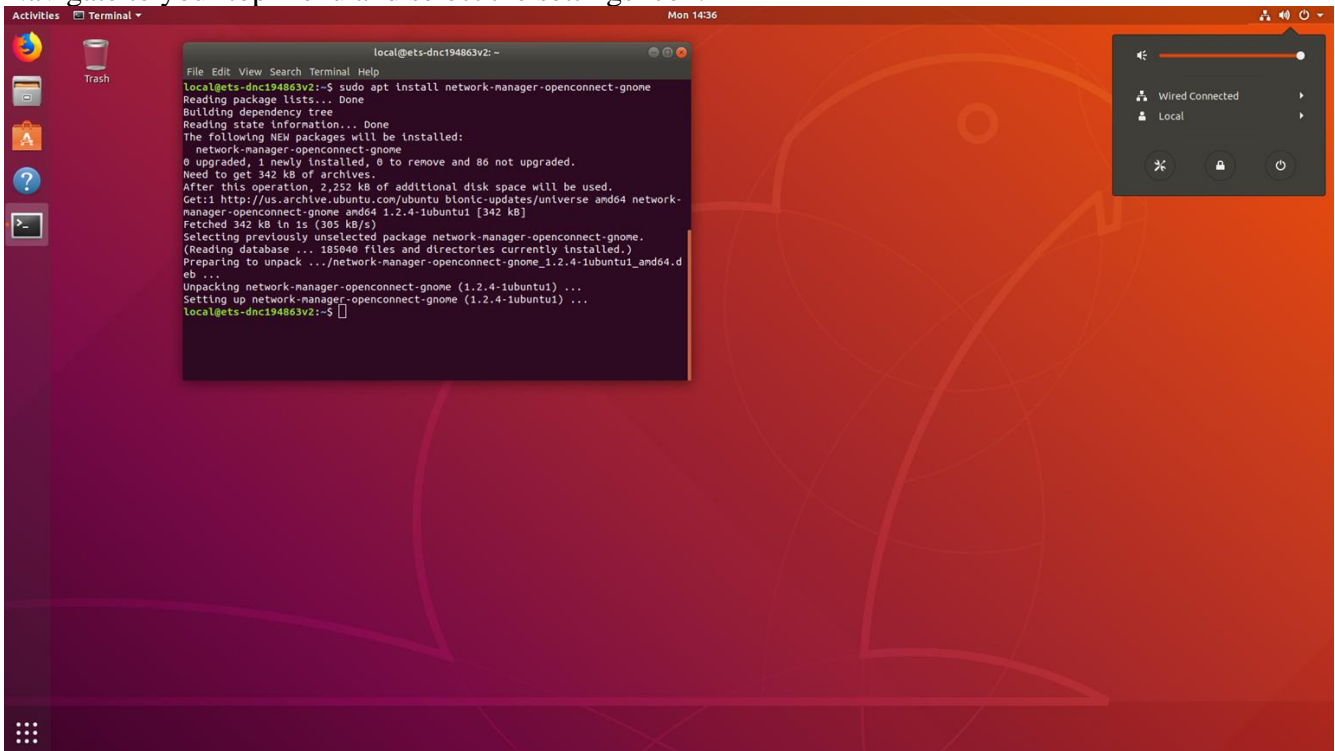


A terminal will open. Type the following to install the OpenConnect plugin for NetworkManager.

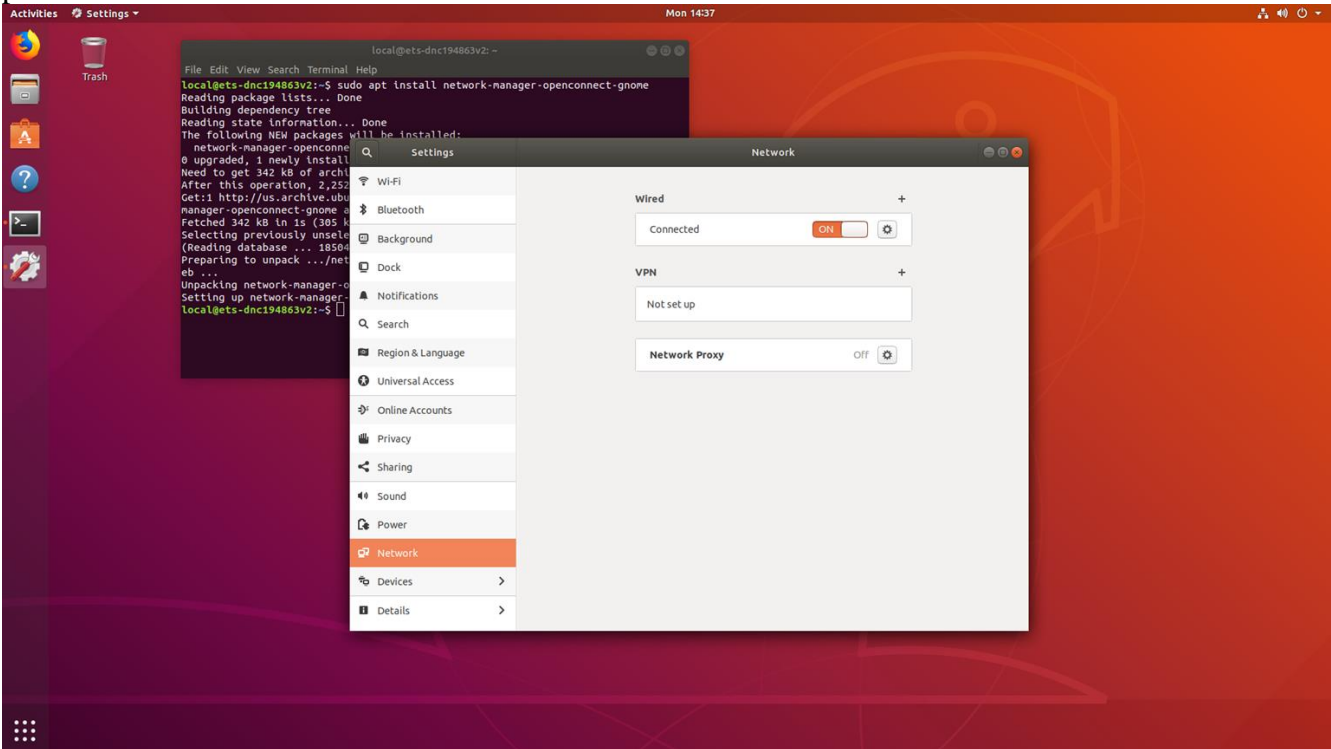
# sudo apt install network-manager-openconnect-gnome



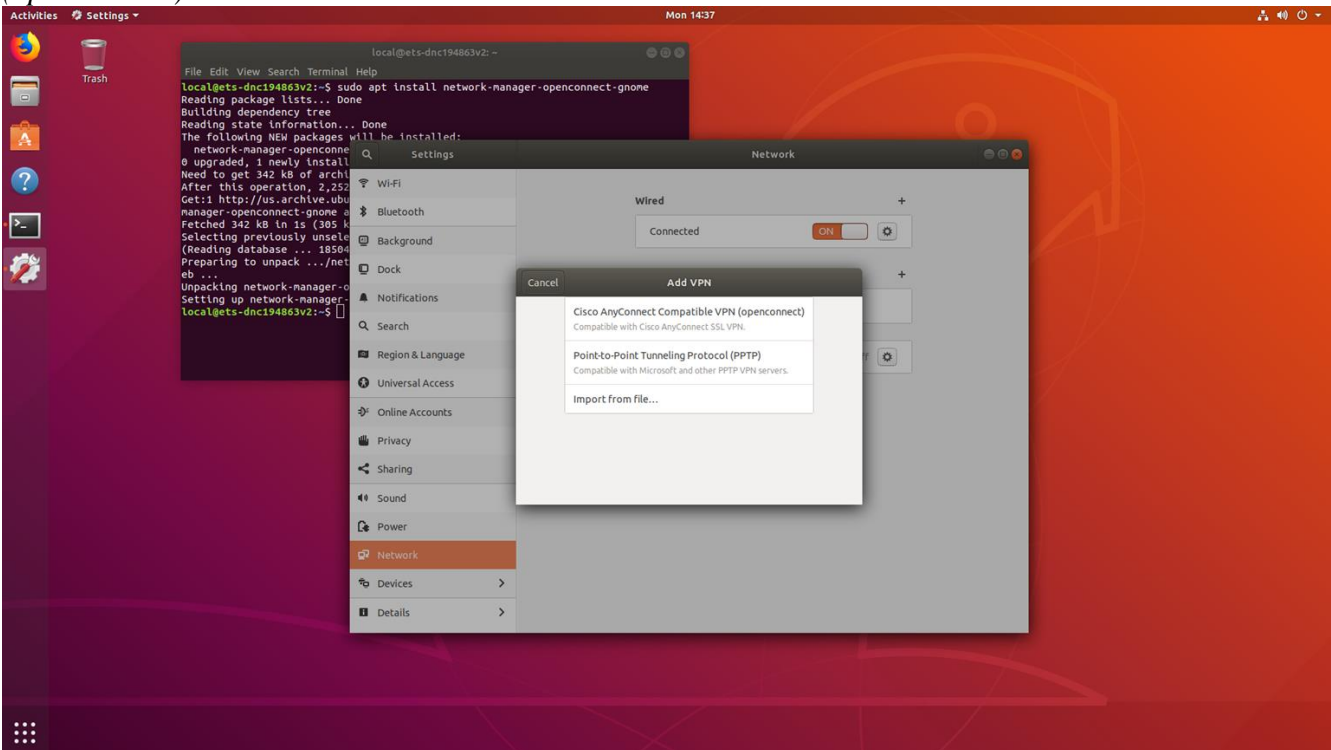
Navigate to your top menu and select the settings icon.



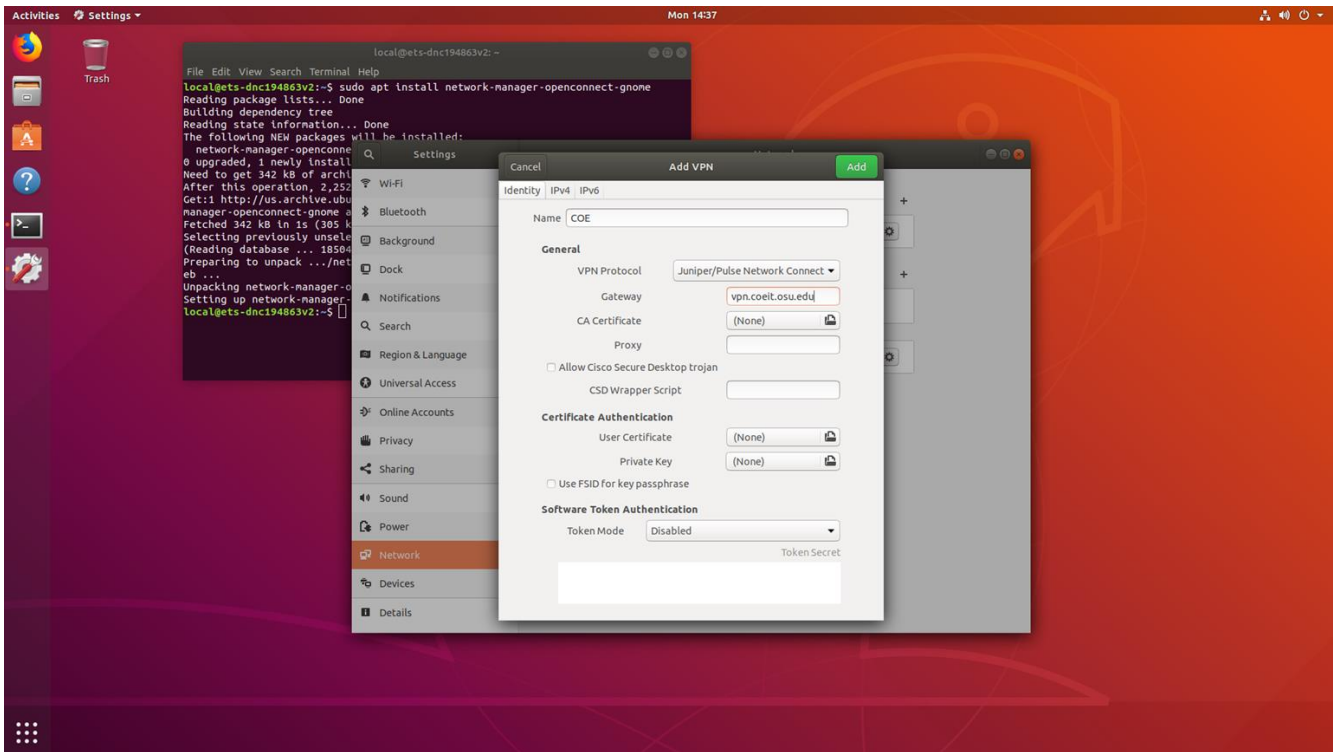
In the settings menu select *Network* from the the side menu and click the ‘+’ icon to create a new VPN profile.



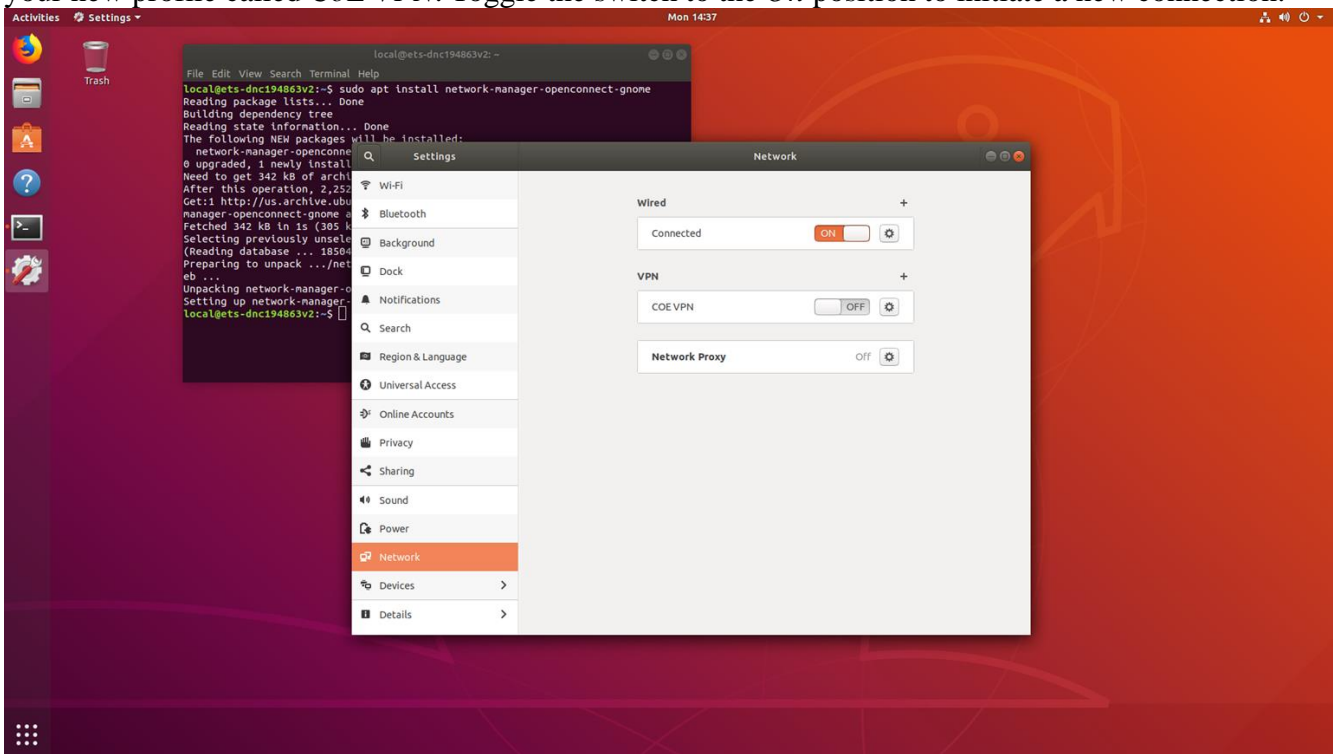
You will be presented with a list of different VPN types. Select *Cisco AnyConnect Compatible VPN (openconnect)*.



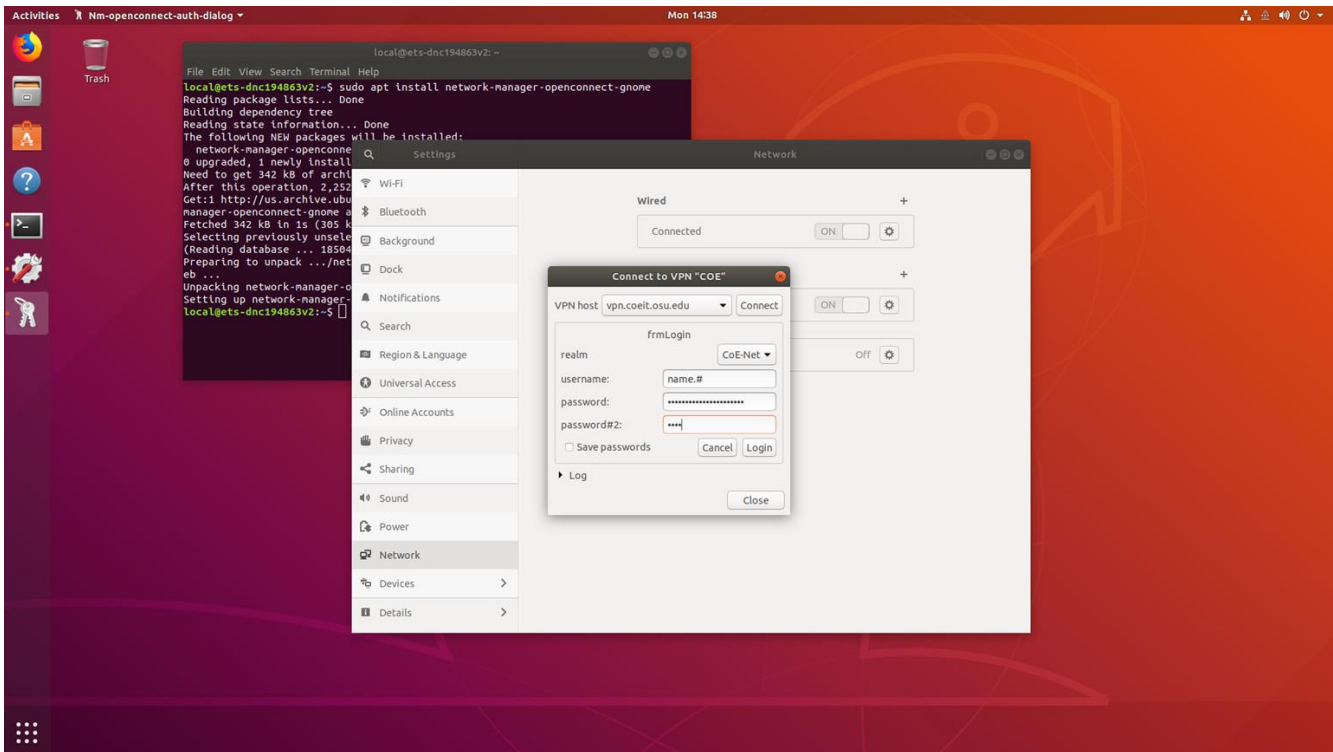
A new dialog will open prompting for connection details. For **VPN Protocol** select *Juniper/Pulse Network Connect*, enter `vpn.coeit.osu.edu` as the **Gateway** and click add to finish creating the profile.



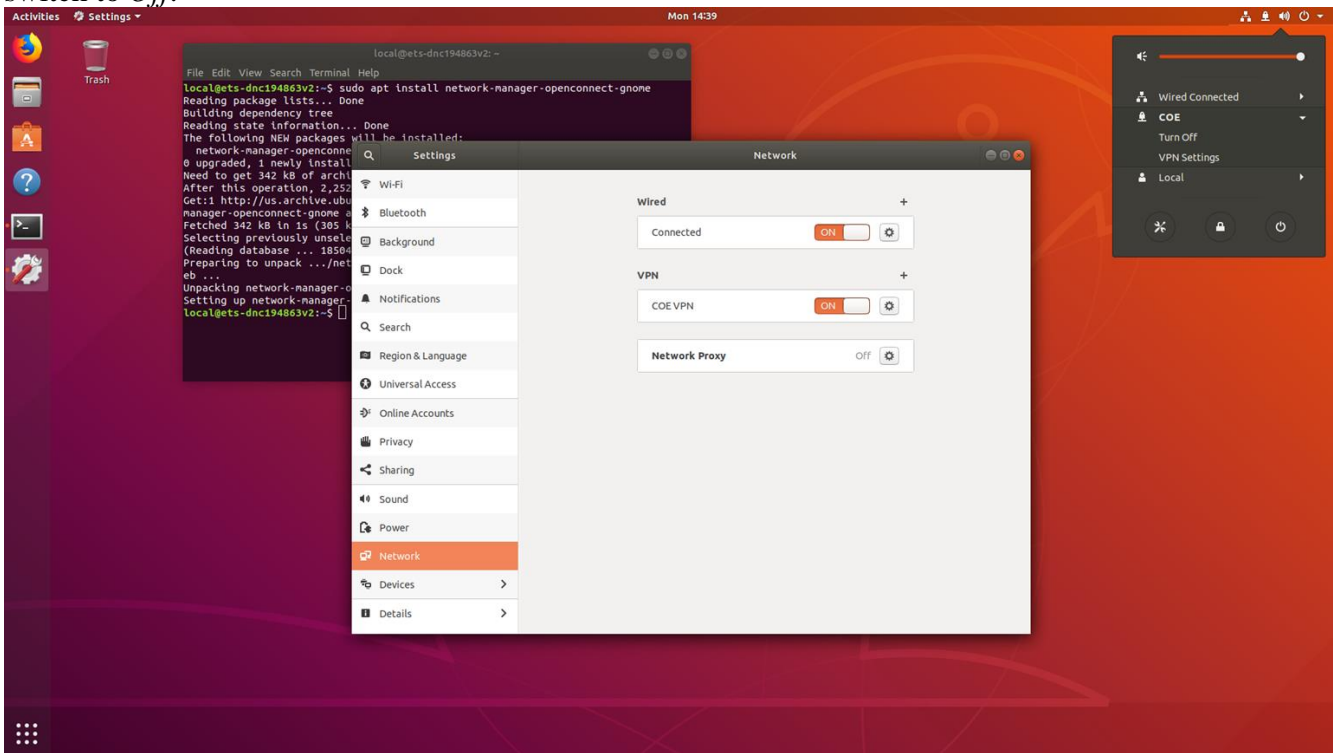
You will be returned to the main network management screen. Under the *VPN* heading you should see your new profile called *CoE VPN*. Toggle the switch to the *On* position to initiate a new connection.



A dialog will appear prompting you for your credentials. Enter your *name.#* in the **username** field, your *OSU Password* in the **password** field, and one of the following in the **password#2** field: 'push' to receive a push notification on your phone, 'text' to receive a text message, or 'call' to receive a voice call. Once entered push *Login* to authenticate. Respond to the Duo prompt according your selection; in the application the request will say *Ohio State University College of Engineering – Juniper SSL VPN*.



Congratulations! You're now connected to the VPN. To disconnect from the VPN go back to the top menu, expand the VPN connection settings accordion (labeled *CoE* when connected) and toggle the switch to *Off*.



## Notes

- You cannot use this guide to connect to the *Restricted* VPN profile as that requires the client from PulseSecure.
- If you have any trouble with this guide feel free to submit a ticket to the CoE service desk by emailing [etshelp@osu.edu](mailto:etshelp@osu.edu).